

**REFERENCE NOTES**

- A. PAVEMENT DIMENSIONS ARE TO BACK OF CURB
- B. BASELINE IS CENTRE LINE RIGHT-OF-WAY
- C. PROPERTY LINES OBTAINED FROM CITY OF WINNIPEG L.B.I.S., AND NO SCALE FACTOR WAS APPLIED
- D. REFER TO AECOM FIELD BOOK NO. 5037

**CONSTRUCTION NOTES**

1. PLANE EXISTING ASPHALTIC PAVEMENT
2. CONSTRUCT NEW ASPHALTIC PAVEMENT TYPE 1A (85mm TYP.)
3. REMOVE EXISTING CONCRETE AND CONSTRUCT NEW 150mm REINFORCED CONCRETE PAVEMENT c/w 85mm ASPHALTIC OVERLAY
4. PLANE EXISTING BARRIER CURB AND INSTALL NEW CONCRETE BARRIER CURB (100mm REVEAL HT. DOWELLED)
5. CONSTRUCT NEW CONCRETE BARRIER CURB (100mm REVEAL HT. SEPARATE)
6. REMOVE EXISTING BARRIER CURB AND INSTALL NEW CONCRETE MODIFIED BARRIER CURB (150mm REVEAL HT. DOWELED)
7. CONSTRUCT NEW CONCRETE CURB RAMP (8-12mm HT. MONOLITHIC)
8. RENEW 100mm CONCRETE SIDEWALK
9. REMOVE EXISTING 100mm CONCRETE SIDEWALK
10. REMOVE EXISTING CATCHBASIN / CURB INLET
11. INSTALL NEW CATCHBASIN 1800mm (SD-024) COMBINED WITH BARRIER CURB AND GUTTER INLET FRAME AND COVER (AP-011 / AP-012) AND CONNECT TO 375 CONCRETE CS
12. ADJUST EXISTING MANHOLE / CATCHBASIN TO GRADE
13. ADJUST EXISTING CURB STOP TO GRADE



**METRIC**  
WHOLE NUMBERS INDICATE MILLIMETRES  
DECIMALIZED NUMBERS INDICATE METRES

150 mm W.M.	WATERMAIN	150 mm W.M.	HYDRO	— x —	— x —	— x —	— x —
Hydrant	HYDRANT	Manhole	M.T.S.	North Gutter	North Gutter	North Gutter	North Gutter
Valve	VALVE	Manhole	CONCRETE	South Gutter	South Gutter	South Gutter	South Gutter
Land Drainage Sewer	LAND DRAINAGE SEWER	Manhole	ASPHALT	N/W Property Line	N/W Property Line	N/W Property Line	N/W Property Line
Wastewater Sewer	WASTEWATER SEWER	Manhole	PROPERTY LINE	S/E Property Line	S/E Property Line	S/E Property Line	S/E Property Line
Manhole	MANHOLE	Manhole	SURVEY BAR				
Catch Basin	CATCH BASIN	Manhole	ELEVATION				
Catch Pit	CATCH PIT	Manhole	TREE				
Junctions	JUNCTIONS	Manhole	SIDEWALK RAMP				
Culvert	CULVERT	Manhole	CONCRETE SIDEWALK				
Gas	GAS	Manhole	FENCE				
Existing	LEGEND - PLAN	Proposed	LEGEND - PLAN	Proposed	Existing	LEGEND - PROFILE	Proposed

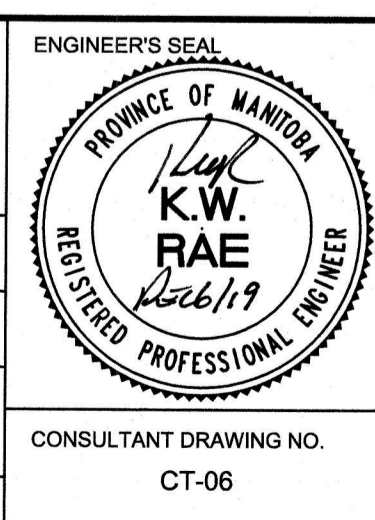
**LOCATION APPROVED UNDERGROUND STRUCTURES**

SUPV. U/G STRUCTURES COMMITTEE DATE

**NOTE:**  
LOCATION OF UNDERGROUND STRUCTURES AS SHOWN ARE BASED ON THE BEST INFORMATION AVAILABLE. BUT NO GUARANTEE IS GIVEN THAT ALL EXISTING UTILITIES ARE SHOWN OR THAT THE GIVEN LOCATIONS ARE EXACT. CONFIRMATION OF EXISTENCE AND EXACT LOCATION OF ALL SERVICES MUST BE OBTAINED FROM THE INDIVIDUAL UTILITIES BEFORE PROCEEDING WITH CONSTRUCTION.

B.M. 50-033	948209 - N.W. Corner of Cumberland Ave. and Edgeland Blvd.		
ELEV. 233.776	Tbl. on iron pipe 1.6m S. of N.L. of Cumberland & on W.L. of Edgeland Blvd.		
0	ISSUED FOR TENDER	12/06/2019	BC
A	ISSUED FOR REVIEW	04/04/2019	BC
NO.	REVISIONS	DATE	BY

<b>AECOM</b>	
DESIGNED BY	JC
CHECKED BY	BC/KWR
DRAWN BY	JC
APPROVED BY	[Signature]
HOR. SCALE:	1:250
VERTICAL:	1:10
RELEASED FOR CONSTRUCTION BY:	[Signature]
DATE	DEC 5/19



**THE CITY OF WINNIPEG**  
PUBLIC WORKS DEPARTMENT  
ENGINEERING DIVISION

2019 RESIDENTIAL STREET RENEWAL PROGRAM

MAUREPAS CRESCENT - EDGELAND BLVD TO EDGELAND BLVD  
PAVEMENT REHABILITATION  
FROM STATION 0+220 TO EDGELAND BOULEVARD

CITY DRAWING NUMBER  
SHEET 06 OF 10

CONSULTANT DRAWING NO. CT-06